

STRATEGIC PROPERTIES GROUP, LLC

Shoppes of Sheldon – Phase II

Location: Tampa, Florida
SE Quadrant of
Sheldon Rd. and W. Waters Ave.
North of Wendy's and across the
street from Walgreens



**Occupancy in the 3rd
Quarter of 2006**

**Interior build-out
floor plan built to suit**

**Suitable for
Single or Multi-user**

**Access from
Sheldon Rd. and Waters Ave.**

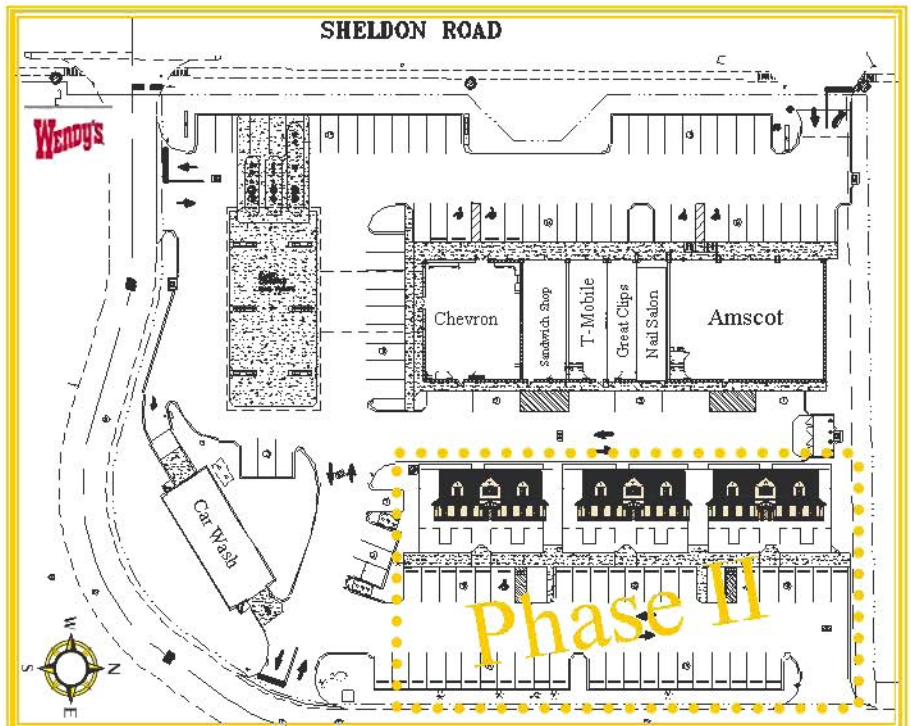
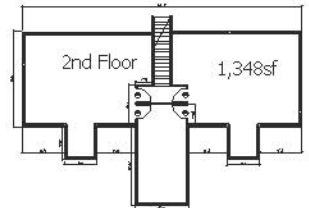
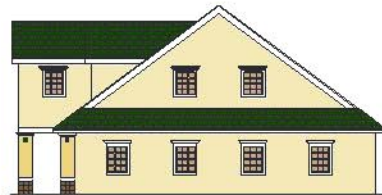
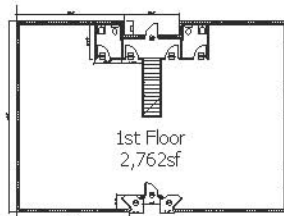
*Don't miss the
opportunity of locating
on the growing
Westchase/Citrus Park
Corridor!*

4,110sf



\$175/sf

Individual Office Condos FOR SALE



For Information contact: **Barry Jackson**

Phone: (813) 787-5823

E-mail: bjackson@strategicpropertiesgroup.com