

Camp Indianhead Crossings

LAND O' LAKES/PASCO COUNTY, FL

FOR LEASE

RETAIL ♦ RESTAURANT ♦ OFFICE

Traffic Flow: 63,800 cars daily

Occupancy 3rd Quarter 2008

Call for Lease Rates

▲
▪Demographics▪
(5 mile radius)

2007 Est. Population: 67,813
2012 Proj. Population: 83,126

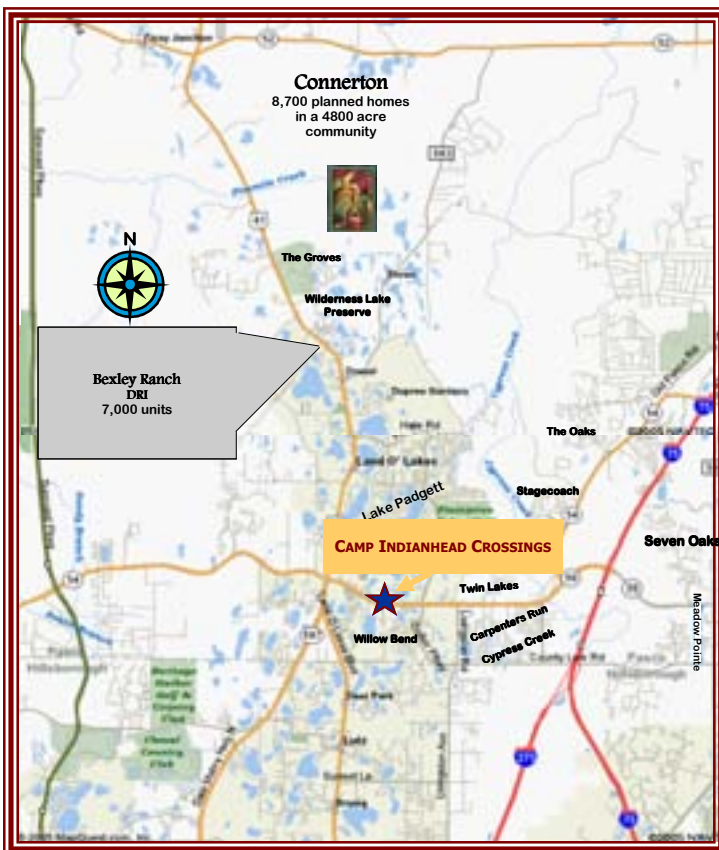
60% Increase in Households since 2000

Avg. Family Household Income: \$95,042
▼

Location: Land O' Lakes, Florida
on State Road 54
1 mile East of US 41 in Pasco County



18,600 sf Commercial Retail & Office
2 floors



Surrounding Communities:

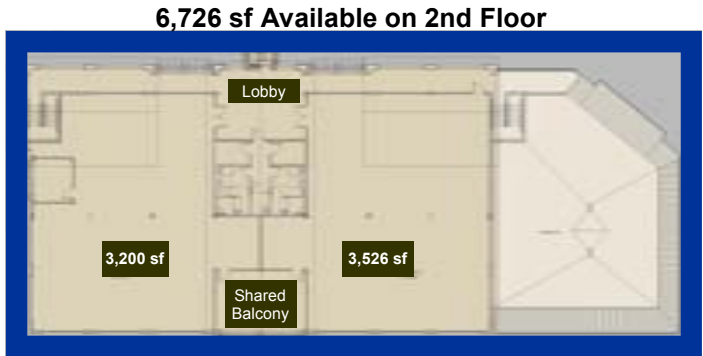
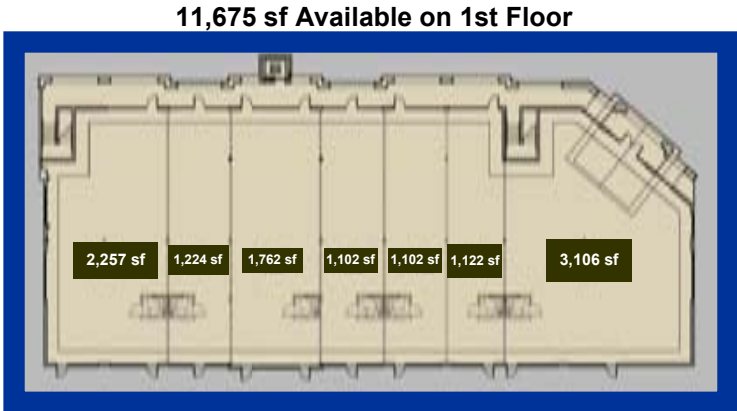
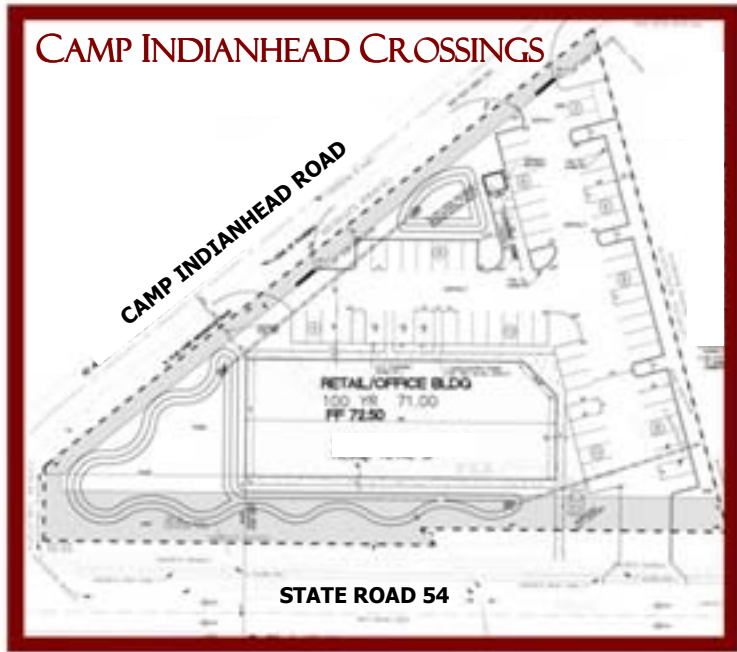
- ♦ Lake Padgett ♦ Willow Bend ♦ The Oaks ♦
- ♦ Plantation Palms ♦ Stagecoach ♦ Cypress Creek ♦

For Leasing Information Contact:

John Erik Savitsky
(813) 293-3201

jes@SPGFL.com

STRATEGIC PROPERTIES GROUP, LLC



Information contained herein has been obtained from sources deemed reliable, but we make no representations or warranties, expressed or implied, as to the accuracy of the information. All projects are subject to change or withdrawal without notice.

